

TITAN
HERCULES
VIKING



TITAN
HERCULES
VIKING





**TITAN
HERCULES
VIKING**

OPTIONS

CAMERA OPTIONS



- Provides additional visibility for operator and crew
- Rail line-of-sight: single camera forward or reverse or 2 cameras for both directions
- Rear coupler viewing
- Up to 4 camera inputs available
- Customized location and visibility to meet local operating conditions and requirements

MAX-TRAN WEIGHT TRANSFER MANAGEMENT SYSTEM

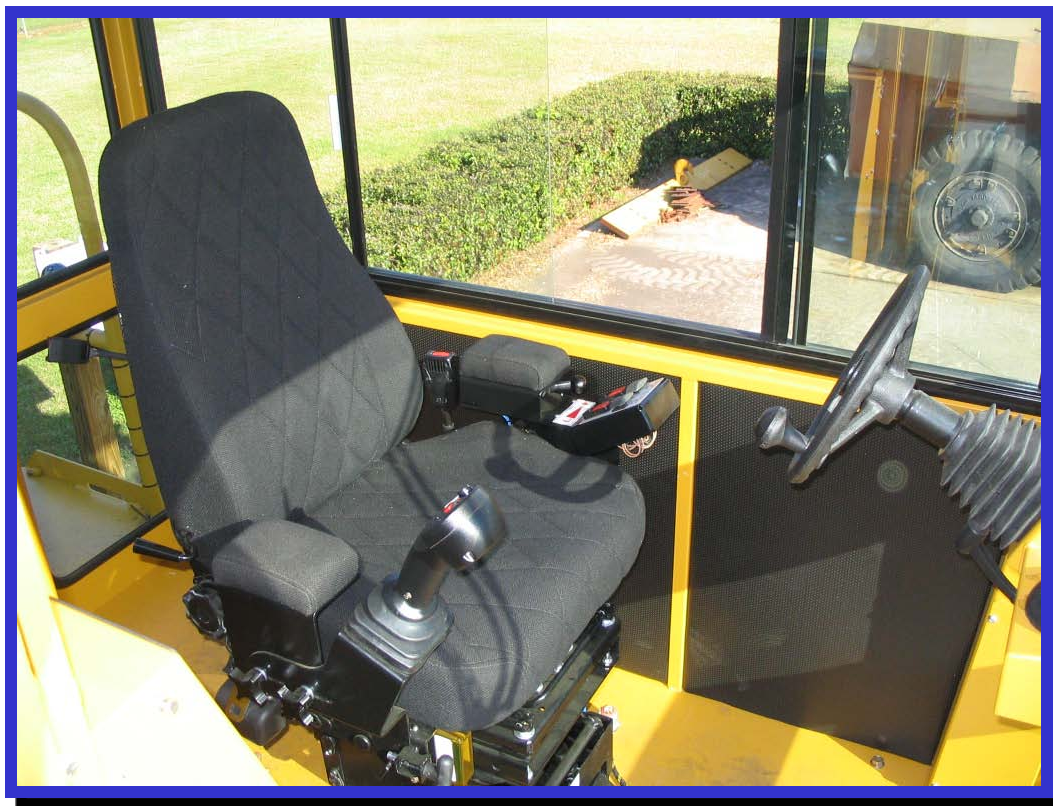
- Patented Trackmobile® system
- Detects weight available for transfer
- Assures maximum weight transfer
- Operator can select automatic or manual modes



VIGILANCE SYSTEM

Operator-in-Position control

- As long as system senses control inputs system does not activate
- In absence of operator inputs for 40 seconds the transmission shifts to neutral, TM service brakes and train air brakes apply, TM air horn sounds





TRAIN AIR CHARGE INDICATOR



- Real-time feedback on train air system operating status
- Positive indication when railcars are fully charged and it is safe to move them
- Only Trackmobile® offers this option



**TITAN
HERCULES
VIKING**

OPTIONS

DUAL WEIGHT TRANSFER GAUGES



- Monitor the coupler cylinder in PSI and BARS
- Optional gauge decal available to display weight transfer in pounds or kilograms



**TITAN
HERCULES
VIKING**

OPTIONS

MAX-TRAC WHEEL SLIP CONTROL SYSTEM



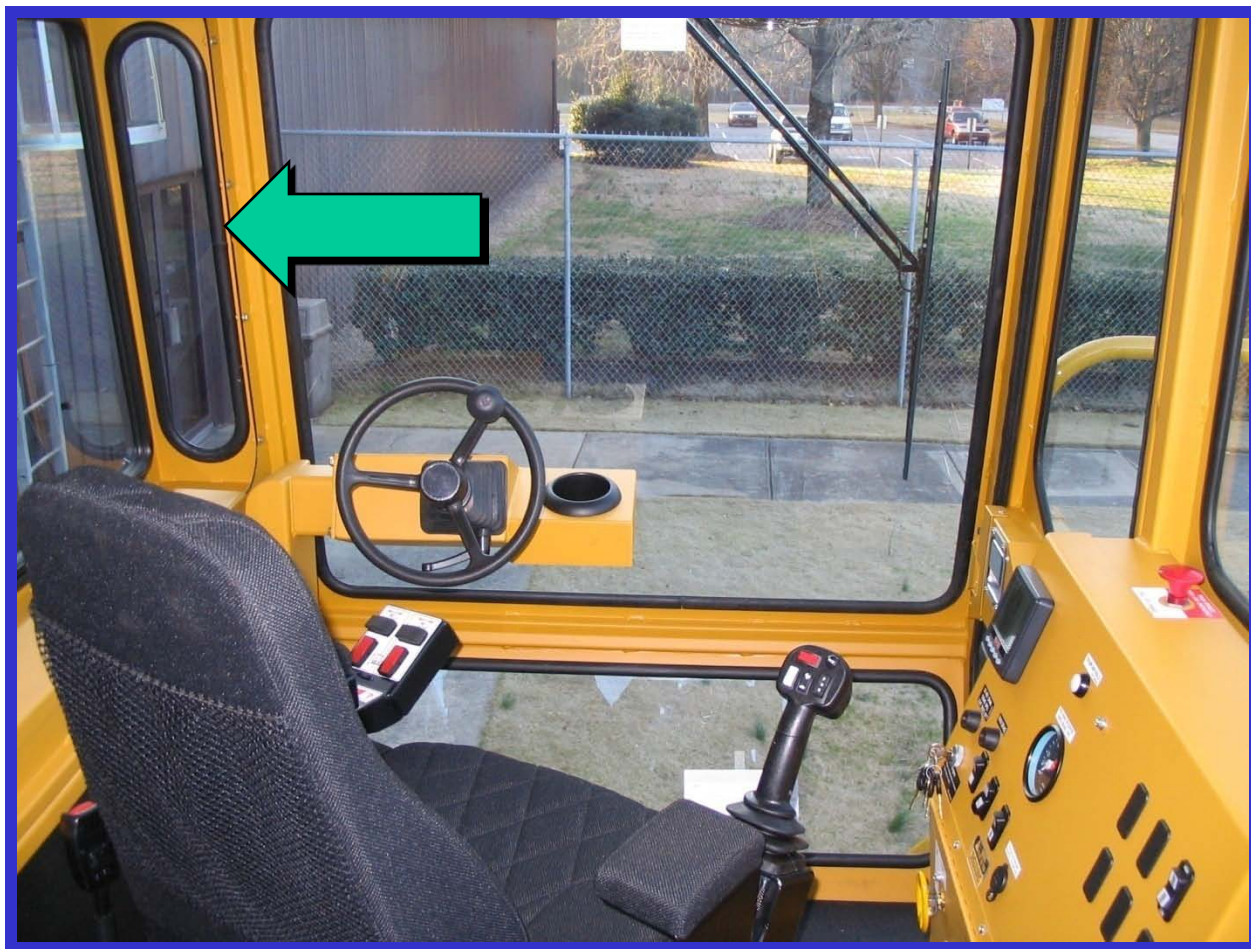
- **Controls wheel slip by modulating engine fuel control to reduce wheel spin and wear**
- **Detects wheel lockup during braking and pulsates brakes to maximize braking action for adverse conditions, reduces wheel flat spots**



**TITAN
HERCULES
VIKING**

OPTIONS

CAB EXTENSION



- **Increased vision along side of railcars without exposing operator to inclement weather**
- **Extends 8" (200 mm) out from side of operator's cab**
- **Extension is beyond AAR clearance pattern**



**TITAN
HERCULES
VIKING**

OPTIONS

CAB AIR CONDITIONING



- Provides operator comfort in hot or humid climates
- Engine-driven compressor
- In-cab overhead evaporator and blower unit
- Cooling capacity optimized to cab size, 30,000 Btu/hr



**TITAN
HERCULES
VIKING**

OPTIONS

TRACK MIRRORS – CAB AND OFF SIDE



- **Large mirrors – lower unit is convex**
- **Provide operator visibility along line of railcars on cab side or opposite side**
- **Select cab and/or offside mounting of 2 mirrors each**

TRACKMOBILE RADIO REMOTE CONTROL SYSTEM

Developed by Trackmobile® and integrated into TM systems

Frequency hopping technology, no FCC license required

Light weight transmitter with long battery life

Visual and audio status feedback to operator





**TITAN
HERCULES
VIKING**

OPTIONS

TRACKMOBILE GROUND CONTROL SYSTEM (GCS)



- Enhances safety during crew operations
- Pocket-size remote transfers positive control to ground person
- Frequency hopping technology, no FCC license required

TIMED ENGINE IDLE SHUTDOWN

- **Reduces fuel consumption**
- **Reduces wear to engine parts**
- **Reduces air pollution**
- **Automatically applies parking brake and shuts down engine**
- **NOTE: Engine shuts down but electrical circuits energized at the time of shutdown remain energized**

FIRE SUPPRESSION SYSTEM

- 30 lbs (13.6 kg) ABC dry chemical system
- Automatic and remote actuated discharge
- Dash mounted monitor
- Nozzle locations:



Engine/transmission compartment

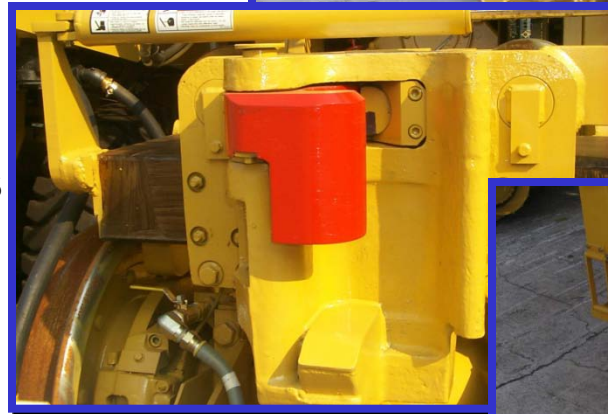
Hydraulic tank

Fuel tank



SPECIAL COUPLERS

- Transit
- UIC
- SA-3
- Low centerline height
- Wide traverse couplers for long cars and sharp curves



NOTE: Weight transfer and tractive effort varies among coupler types

ADDITIONAL MANUALS



- Additional full set comprehensive of safety, operating and service manuals, parts book, major component books